

CLINICAL CASES

Micro-Layering a New Trend Techniques
KATANA™ Zirconia and CERABIEN™ ZR(CZR)

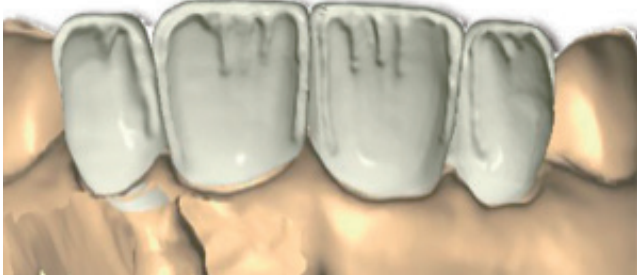


FRAME STRUCTURE LINGUAL SUPPORT

Hybrid designing meets the functional needs in term of lower abrasiveness and higher toughness.

By Daniele Rondoni

Step1 Zirconia Frame(KATANA Zirconia HTML A2) cut-back designed to mimic anatomical dentin structure and incisal frame



Step6 Completion of glaze (self-glaze) firing



Step2 Application of Internal Stain



Step7 Polishing of lingual side



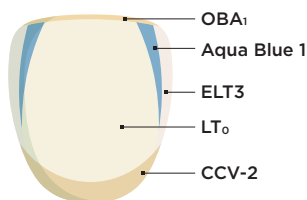
Step3 Completion of Internal Stain firing



Step8 Post-operative view



Step4 Application of Luster, Clear Cervical and Opacious Body



Step5 Completion of firing



4-Years Post-operative



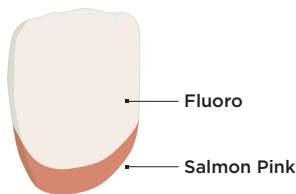
Step1 Final Preparations



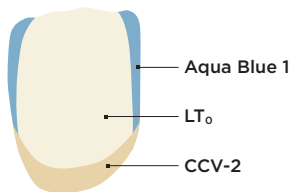
Step2 Zirconia Frame(KATANA Zirconia STML A2) cut-back designed to reproduce translucent incisal area



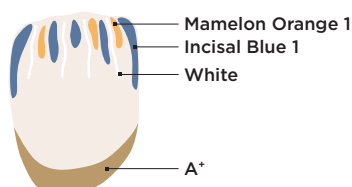
Step3 Application of 1st Internal Stain and firing



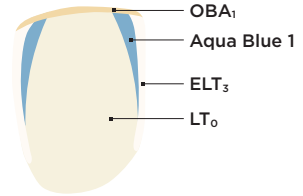
Step4 Application of 1st Luster, Clear Cervical and firing



Step5 Application of 2nd Internal Stain and firing



Step6 Application of 2nd Luster, and Opacious Body



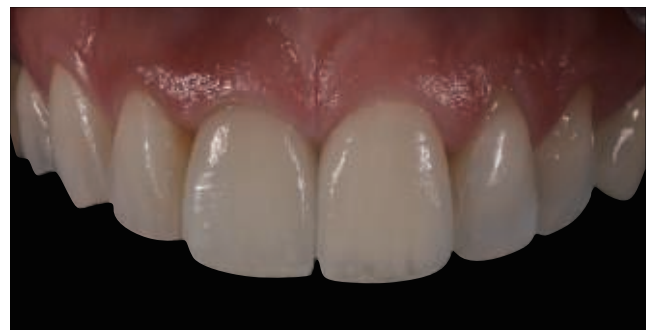
Step7 Completion of firing



Step8 Completion of morphological correction



Step9 Post-operative view



MINIMAL CUT-BACK DESIGN

KATANA multi-layered zirconia allows me to achieve great esthetic and functional outcomes on high risk patients.

Sung Bin Im, MDC, CDT
Sergio R Arias, DDS, MS

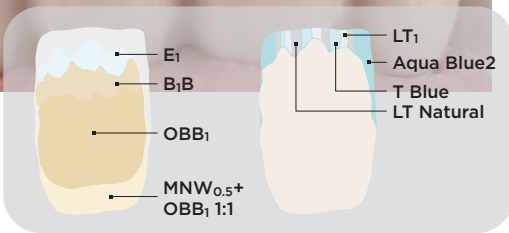
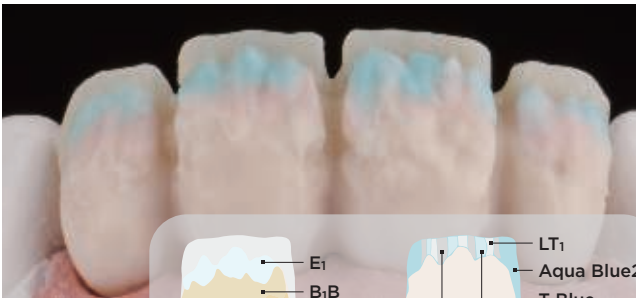
Step1 Titanium Abutments(#7, 9) were placed on the solid model



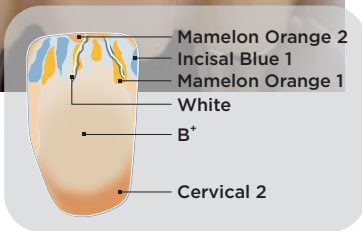
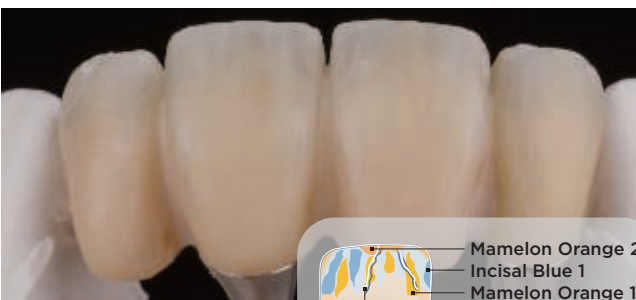
Step2 Zirconia Frame(KATANA Zirconia HT10) cut-back designed to mimic anatomical dentin structure and incisal frame



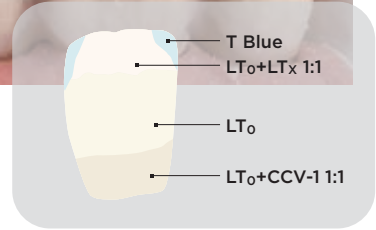
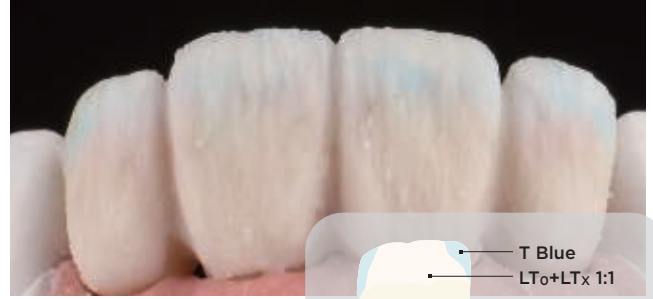
Step3 Application and firing of Cerabien™ ZR (CZR) to achieve target shade and incisal effect



Step4 Completion of Internal Stain firing



Step5 Completion of Luster and Clear Cervical layering



Step6 Surface detail check



Step7 Post-operative view



MINIMAL CUT-BACK DESIGN

Accommodate esthetics and function, achieves natural color and surface texture due to thin porcelain layer.

Keisuke Ihara, RDT
Yohei Sato, DMD, PhD
Tsurumi University School of Dental Medicine

Step1 Teeth preparation



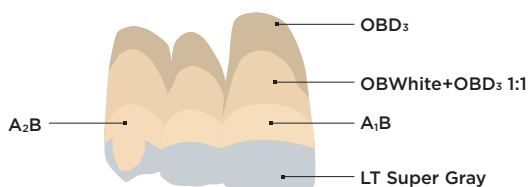
Step2 Inner crowns were placed on the abutments



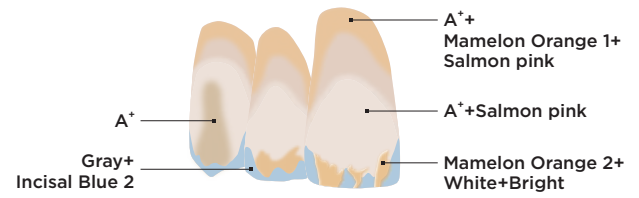
Step3 Zirconia Frame(KATANA Zirconia HTML A1) cut-back designed for incisal frame



Step4 Application of Cerabien™ ZR(CZR) for making base color and firing



Step5 Application of Internal Stain and firing



Step6 The final restoration and inner crown parts



Step7 Post-operative view





Kuraray Noritake Dental Inc.

300 Higashiyama, Miyoshi-cho, Miyoshi, Aichi 470-0293, Japan

Website www.kuraraynoritake.com

- Before using this product, be sure to read the Instructions for Use supplied with the product.
- The specifications and appearance of the product are subject to change without notice.
- Printed color can be slightly different from actual color.

“KATANA” and “CERABIEN” are trademarks of NORITAKE CO., LIMITED